



## Fully-automatic side sealer UNIVERSA 500



Side sealer for virtually  
all packaging tasks

Complete product range  
for efficient packaging processes

**Kalfass** 

Results count.

# Fully-automatic side sealer

## Universa 500

### Excellent economic performance has a name - Universa

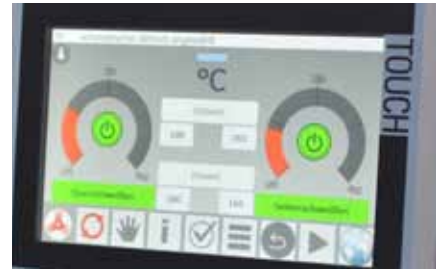
The name of this universal film packaging machine represents both its underlying concept and its objective. Manufacturing companies with a broad product range and industrial services as well as contract packaging companies benefit greatly from the efficient production processes. Precise compliance of the bag length ensures a high standard of quality for the film packaging.



The figure may show optional equipment, ordered separately

### Technical Specifications

	Universa 500
Transverse seal bar, length	500 mm
Product clearance height	up to 200 mm
Power supply	208 - 480 volt
Film, centre-folded film	12 - 80 µm
Transport speed	10 - 35 meter / minute
Packaging capacity, max.	85 cycles / minute



Universa 500: Compact, powerful and efficient. The allrounder for your packaging application with new 7" widescreen Easy Touch-Panel.

### Your benefits highlighted

- New user interface: 7" widescreen Easy Touch-Panel for easiest use for intuitive operator guidance. Redesigned graphic surface for perfect packaging results within the shortest time
- Perfect packaging results for small-format products with full-wrap packaging
- Low space requirements due to its compact design
- Easy integration of the system into existing production lines
- Kalfass product path control for easy changes in format and speed
- Inlet conveyor can be extended for easy and quick threading of the film
- Continuously heated sealing die with replaceable sealing bar, available in various profile shapes for optimum sealing seams, customized to fit the product and film

**Solution based on Kalfass quality. Competence in the production of a wide range of packaging machines from customer tailored systems to packaging systems for integration into production lines.**