



Large-format sleevewrapper with shrink tunnel

SUPER WRAP 1300/1600 de Luxe In-Line

Your chance to make a big impact!

They were simply made for one another: the large format sleeve-wrapper Super Wrap 1300 or 1600 de Luxe In-Line and the shrink tunnel Universal 1300 NT or Universal 1600 NT shrink tunnel with HV technology.

This combination makes total closure transportation packaging possible, and does away with the need for additional fusion or sealing tools. The innovative HV technology of the shrink tunnel is responsible for controlled overlapping and adhesion of the excess side film, without touching the product. You can make material savings of up to 15% in comparison with conventional fusion sealing methods, while the packaging quality is far superior. Alternatively, conventional sleeve wrapper packages with side openings or fusion sealing can be carried out with the basic tunnel version.

This machine combination was created for big tasks: the large format sleeve wrappers Super Wrap 1300 and 1600 de Luxe In-Line. Both machines can easily pack any products with an extra large format: furniture and shelf components, construction and insulating materials, multi-package bundles, and much more. The product is fed into the system fully automatically on an in-line transport conveyor. With clearance heights of 500 mm (Super Wrap 1300) and 400mm (Super Wrap 1600, can be enlarged to 700mm), this system has all you could possibly need.

Kallfass large-format sleeve wrappers are distinguished by their thoroughly tested and well matured machine concept, which is designed to be extremely reliable. In tough, continuous use industrial applications, they operate extremely reliably with an excellent record for available machine time. These are results that show: the machines pack at a speed of 18 or 20 cycles/ minute. This means that they have a sufficiently high performance reserve for most requirements.



Kallfass
Verpackungsmaschinen

Results count.

Facts, Data, Figures

Technical data	Super Wrap 1300 de Luxe In-Line	Super Wrap 1600 de Luxe In-Line
Film:	flat film, up to approx. 120 micron	flat film, up to approx. 120 micron
Outside diameter of film reel, max.:	400 mm	400 mm
Core diameter of film reel, approx.:	76 mm	76 mm
Width of film reel, max.:	1350 mm top roll; 1300 mm bottom roll	lower reel 1600 mm; upper reel 1720 mm
Clearance in width:	1300 mm	1600 mm
Clearance in height :	100 - 500 mm (adjustable)	400 mm
Sealing system - permanently heated seal bar with profile contour, special coating, temperature control by means of thermostat, maintenance free for absolutely inodorous operation:	included	included
Operator interface:	Touchpanel, SIEMENS TP 170	Touchpanel, SIEMENS TP 170
Programmable logic controller (PLC):	SIEMENS S7	SIEMENS S7
In-line transport conveyor (infeed area):	length 1300 mm, width 1000 mm	2050 mm long, 1300 mm wide
Discharge conveyor (outfeed area):	length 1300 mm, width 1000 mm, including transfer roller	2050 mm long, 1300 mm wide including transfer roller
Pneumatically operated holding-down device:	stroke 125 mm, adjustable in height	stroke 125 mm, adjustable in height
Working height, adjustable:	815 - 915 mm	815 - 915 mm
Power supply - 400 volts - 50 Hz - 3-phase:	with protective earth conductor	with protective earth conductor
Rated capacity:	5.5 kVA	6.0 kVA
Nominal current at 400 V:	8.0 amps	8.6 amps
Compressed air supply:	6 bar, dry air	6 bar, dry air
Compressed air consumption approx.:	28 L/cycle	50 L/cycle
Position of control cabinet and operating side:	left hand side in working direction	left hand side in working direction
Colour:	KALLFASS Anthracite	KALLFASS Anthracite

Options at extra cost

Additional 100 mm in clearance, up to max. 700 mm, per 100 mm (only Super Wrap 1600)

Upper and lower film pre-dispensing for light products (only Super Wrap 1600)

Column-mounted lifting hoist; radius 2,000 mm, lifting capacity 250 kg, total height 3.840 mm; range 360°, lifting gear with chain block, incl. trolley for manual operation; hoist to be mounted on firm base (only Super Wrap 1600)

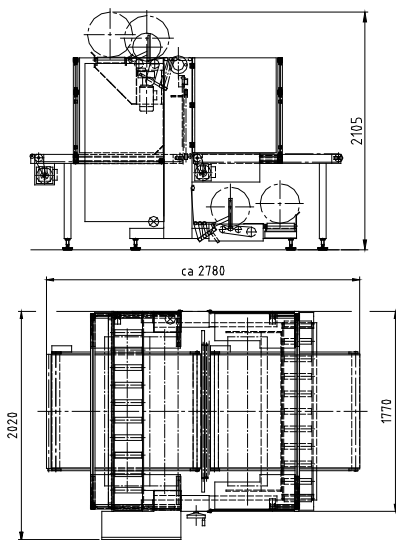
Special colour (structure lacquer, monochromatic)

Special voltage (for standard voltage see technical data)

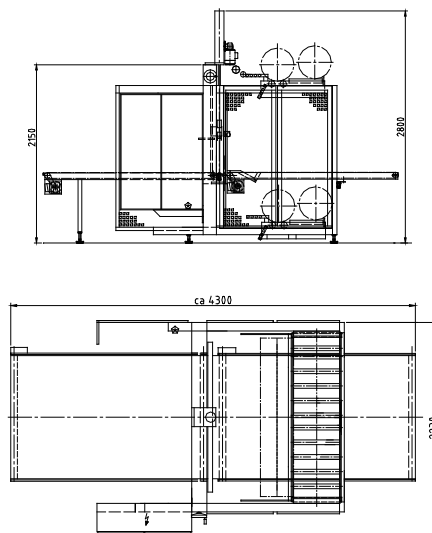
Machine dimensions (approx. in mm):

(This drawing may show options which are not included in the basic machine version and are available against up-charge only.)

Super Wrap 1300



Super Wrap 1600



Kallfass
Verpackungsmaschinen

Kallfass Verpackungsmaschinen GmbH
Siemensstraße 8 · D-72622 Nürtingen-Zizishausen
Phone +49 (0)7022/607-0 · Fax +49 (0)7022/607-200
info@kallfass.com · www.kallfass.com

